

SUPERINTENDENT'S MESSAGE 2022

June 2022

I would like to thank the entire community for playing such a critical role in supporting our schools and students, especially as this challenging global pandemic continues. Over the past year, our amazing community of teachers, staff, parents, students and neighborhood leaders came together to ensure all students received an excellent education.

Community engagement and support for our schools and students is one of the reasons our neighborhoods are wonderful places to live. For nearly 30 years our community has supported our award-winning schools with voter-approved, local parcel tax funding to deliver the excellent education we’ve come to expect in the Los Altos School District.

For decades, state funding for our schools has been uncertain and unstable. Locally-based revenues from our parcel taxes help sustain core academic programs, expand innovative STEM programs, attract and retain top-quality teachers and many more critical services. Thanks to your ongoing support, our school district consistently ranks in the top 1% of more than 1,000 districts across California.

We truly appreciate your ongoing support and vote of confidence in our schools. Thank you for helping keep our schools among the very best!

Jeffrey Baier, Superintendent

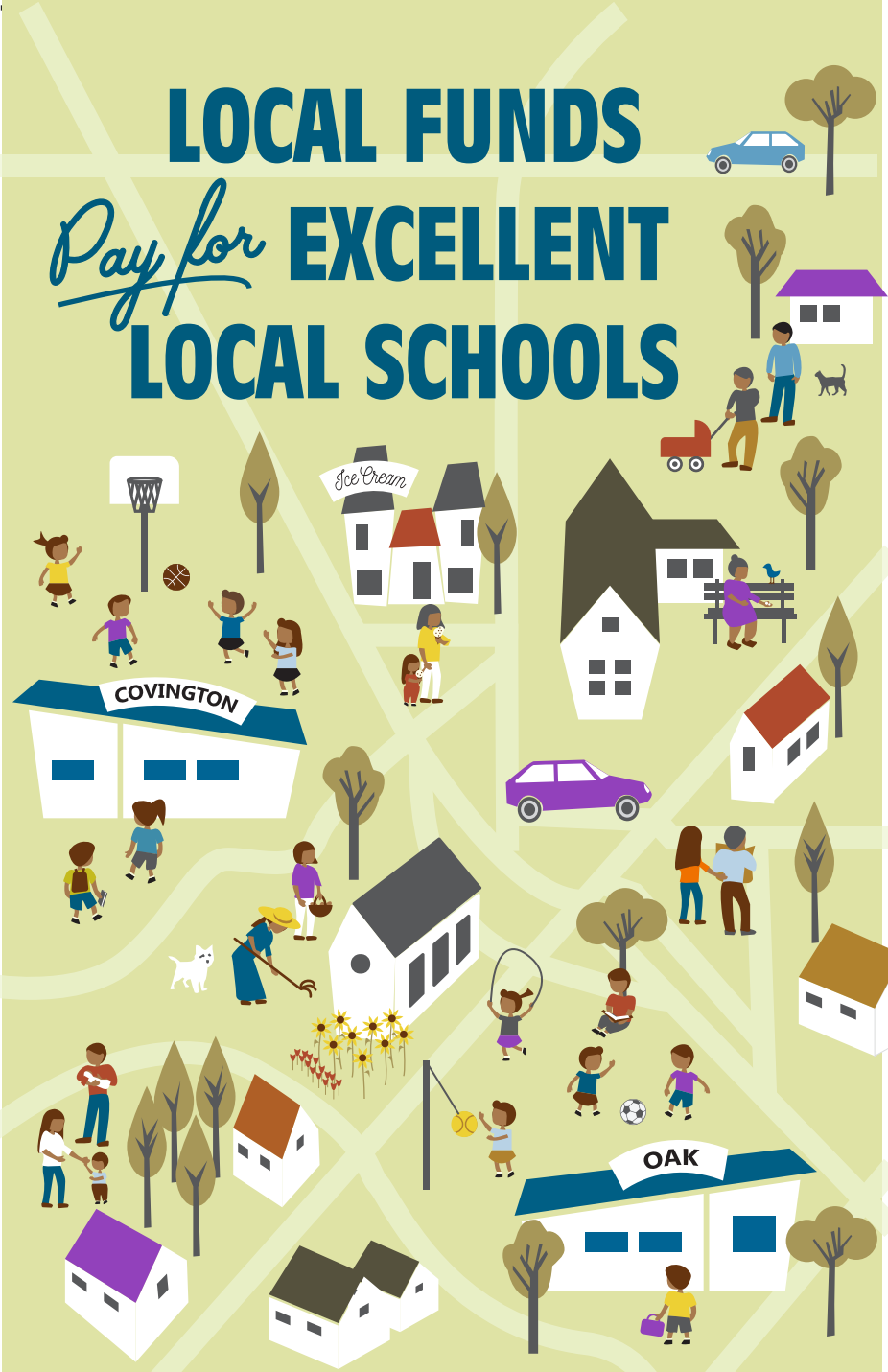
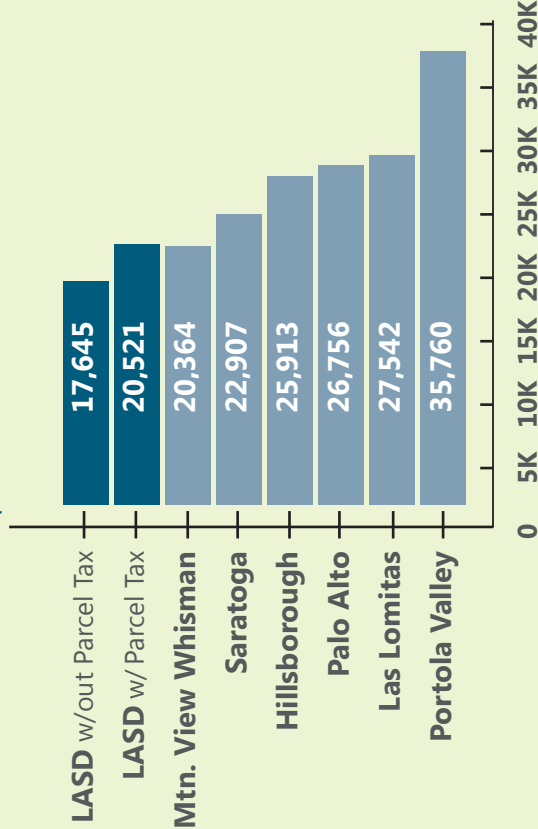
NON-PROFIT ORGANIZATION U.S. POSTAGE  
**PAID**  
PERMIT NO. 26  
LOS ALTOS  
CARRIER ROUTE, PRE-SORT

**LASD**  
Los Altos School District  
201 Covington Road  
Los Altos, CA 94024

POSTAL CUSTOMER

2020-21 REVENUES PER STUDENT

LASD Compared to Similar Districts

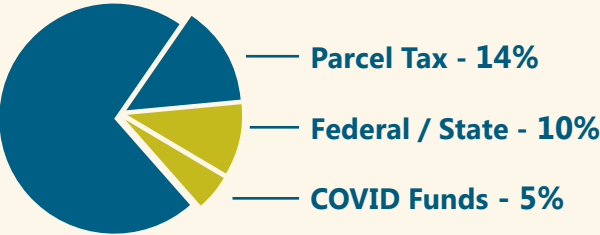


Los Altos School District  
**REPORT CARD to the COMMUNITY**  
Annual Accountability Report To Taxpayers

## 85% of LASD FUNDING CAME FROM OUR LOCAL COMMUNITY IN 2020-21

Los Altos School District (LASD) revenues have come mostly from property taxes, parcel taxes, and developer (impact) fees. During the pandemic LASD received additional COVID-related monies from state and local government. **Historically over 90% of funding comes from local sources.**

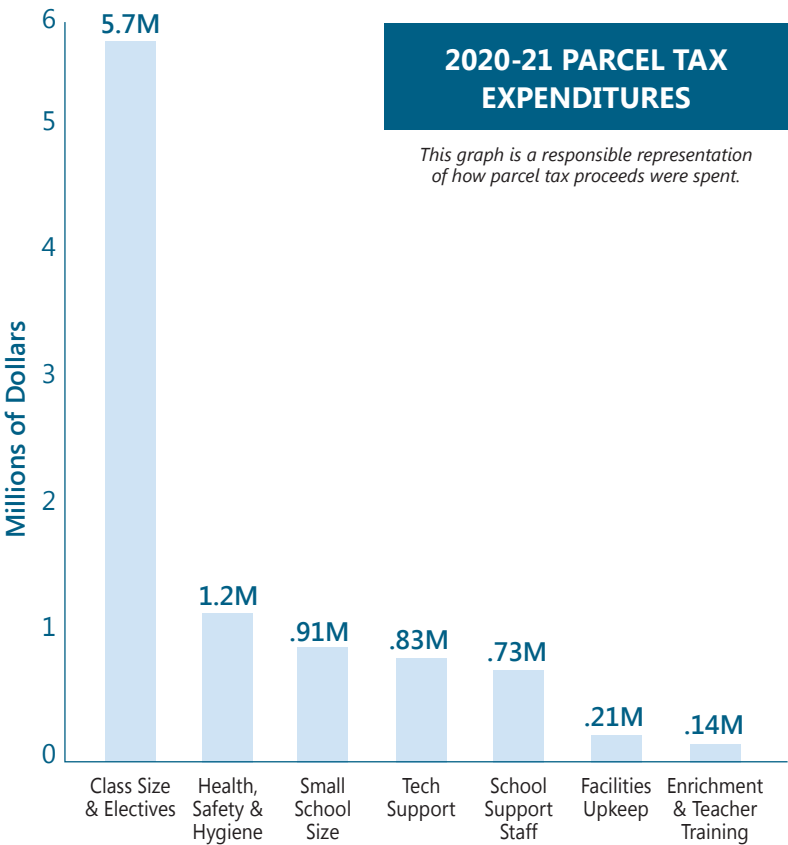
**Parents** and **Community donors** continue to provide sizeable contributions through the Los Altos Educational Foundation (LAEF), which contributed over \$2.5M in 2020/21, as well as through each school's PTA.



## OUR PARCEL TAXES PROVIDE 14% OF LASD FUNDING

A voter-approved permanent special tax assessment of \$597 per parcel generates over \$7.5 million annually. Voters approved and reauthorized a second tax of \$223 per parcel, which will expire in 2025. In total, parcel taxes provide approximately \$10 million annually to LASD.

Seniors who are owner-occupants of their homes may apply for an exemption from parcel taxes. For more information, contact LASD at 650-947-1150 or [www.losaltos.k12.ca.us](http://www.losaltos.k12.ca.us).



## PARCEL TAXES HELP FUND INNOVATION

LASD has been a top-performing, innovative school district for many years. Parcel taxes allow LASD to maintain outstanding core academic programs and attract and retain high quality teachers. They allow the District to explore leading edge STEM programs and new modes of learning to keep LASD at the forefront of education in California. Additionally, parcel taxes help lower class sizes; fund teacher training in new techniques, content and curriculum; provide technology in our classrooms; and support junior high electives. Funds also keep our schools safe and clean by paying for custodians, grounds maintenance, counseling services, nurses, and emergency supplies.

## WHAT IS CACF?

The Citizens' Advisory Committee for Finance (CACF) is a committee of residents appointed by the Board of Trustees to provide **oversight and accountability for parcel tax uses**. The district has implemented CACF-supported policies relating to staff recruiting, medical insurance premium funding and current reserves.

## COVID-19 IMPACTS & FUTURE NEEDS

Increased government funding in 2020-2021 helped offset pandemic-related costs. This higher than usual funding, coupled with a smaller student population, enabled the District to build its reserves. The district will need to carefully plan spending in order to maintain reserves when funding no longer includes COVID-related supplements.

Several factors may significantly impact LASD's budget in the coming years. Although property tax revenue has remained strong over the past several years, the district cannot rely on this trend to continue indefinitely. Additionally, new state mandated programs, including universal meals and transitional Kindergarten, as well as an after school/summer enrichment program, will increase LASD's ongoing expenses.

CACF anticipates increasing expenses in areas including:

- **Learning** While initial results from standardized testing are encouraging, impacts from the pandemic are likely to linger for years and may require increased investments.
- **Mental health/wellness** Additional support may be needed by students and teachers due to the pandemic.
- **Teacher Retention** National trends indicate increasingly difficult challenges for teacher hiring and retention.