

Master Plan

SANTA RITA SCHOOL

Program Side

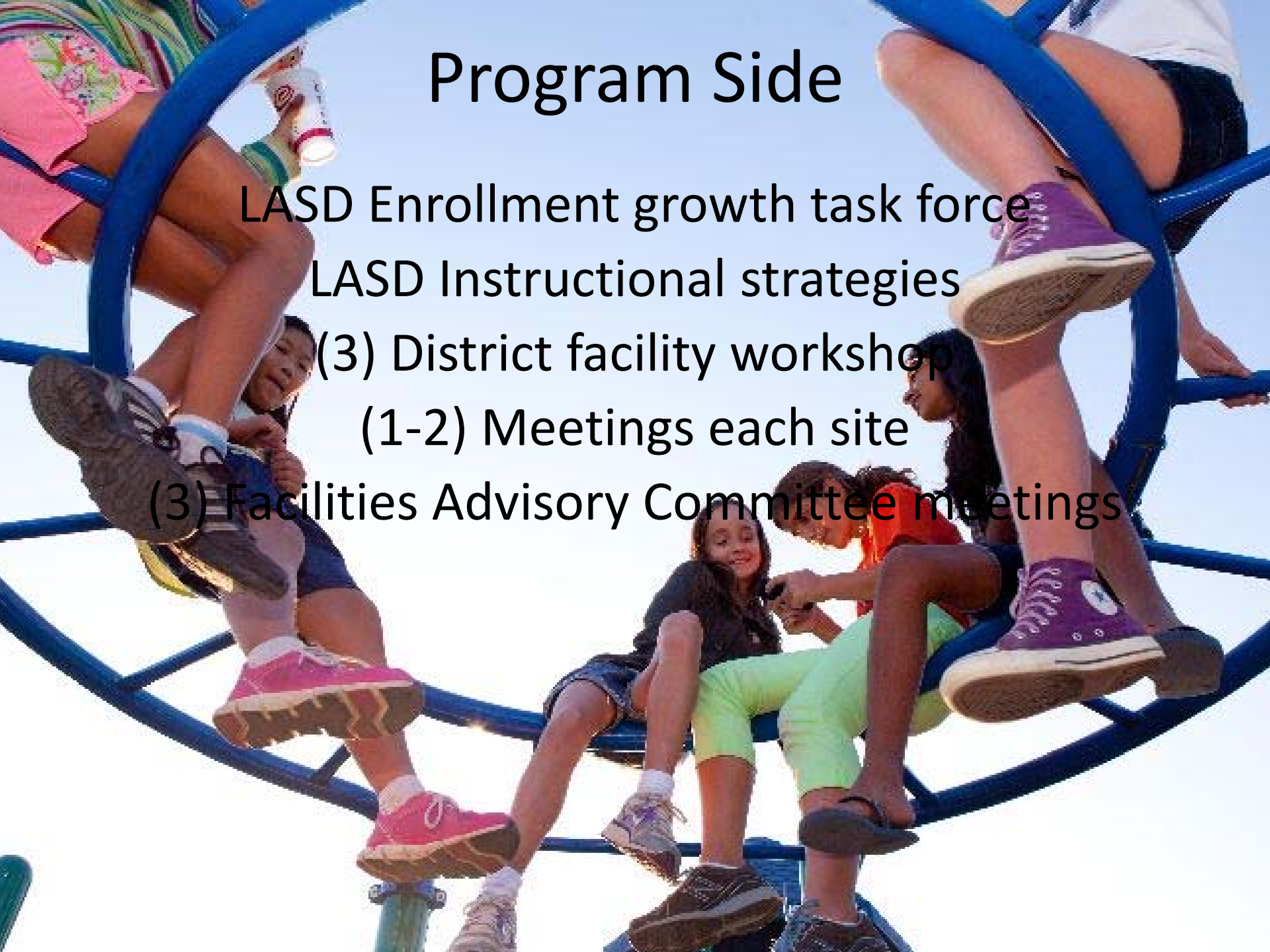
LASD Enrollment growth task force

LASD Instructional strategies

(3) District facility workshop

(1-2) Meetings each site

(3) Facilities Advisory Committee meetings



Asset Side

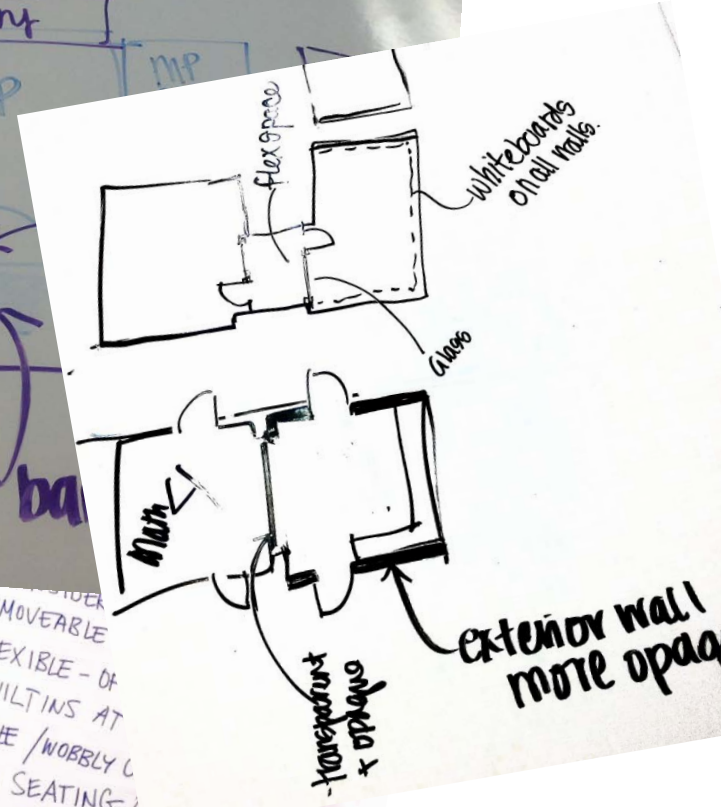
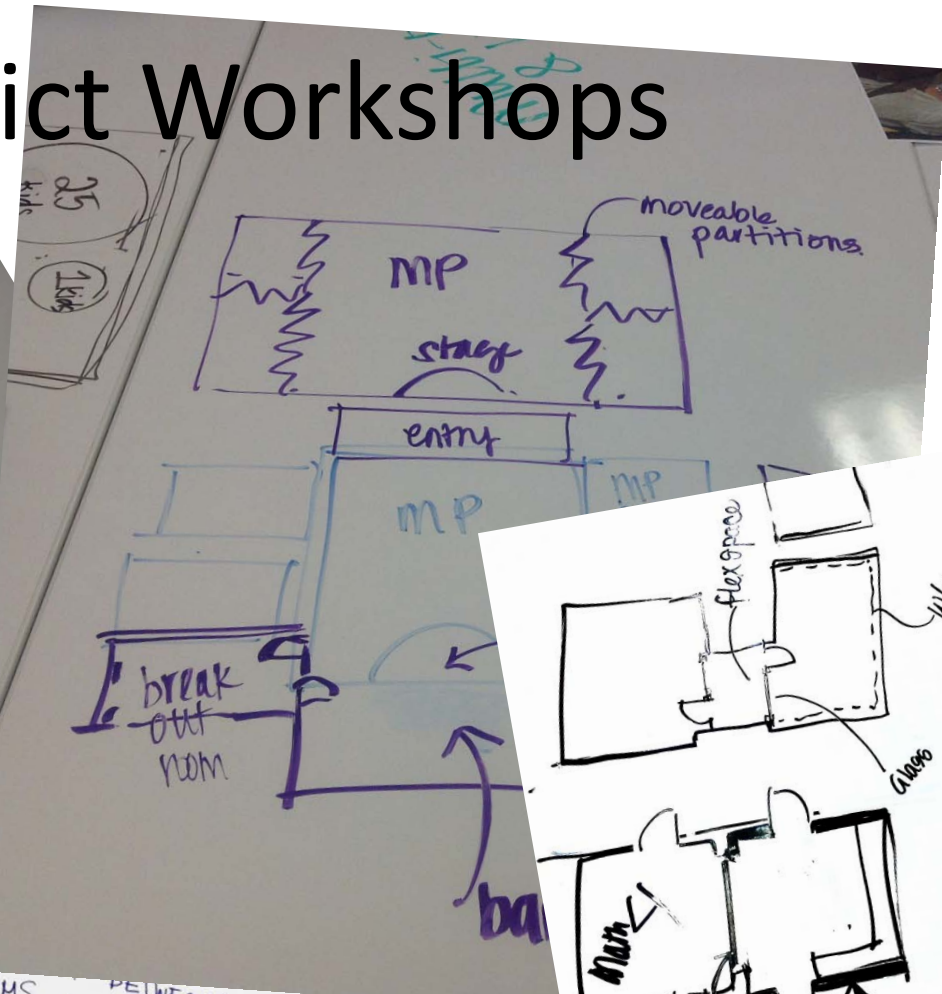
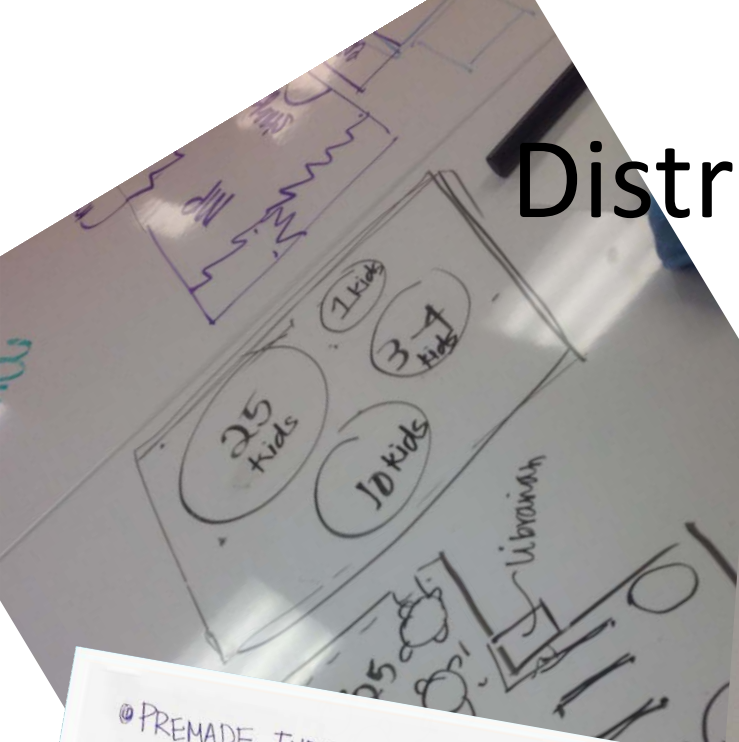
Asset Reserve Analysis
Energy Use Report
(1-2) Meetings each site

Instructional Strategies



- Project-Based and Problem-Based Learning
- Collaborative Learning
- Blended Learning
- Inquiry-based Learning in Science
- Design Thinking

District Workshops



- PREMAD FURNITURE THAT IS FLEXIBLE
- PLACEMENT OF SMARTBOARD + PROJECTOR IS IMPORTANT
- NEED ACCESS TO WALLS - FOR GROUP WORK SPACE
- INDOOR/OUTDOOR SPACE → BARNDOR?
- LAUREL/MENLO PARK
- BOOKROOM - MORE CENTRALLY LOCATED

- ENCOURAGE
- GREATER
- TRANSFER
- BETWEEN CLASSROOMS, BUT HAS ABILITY TO GO FROM TRANSPARENT → OPAQUE
- INTERMEDIATE OUTDOOR SPACE
- NEED OVERFLOW/FLEX ROOM
- CHOICE OF FLOOR COVERING - SOFT BUT WASHABLE?
- storage/walls (whiteboard) at kid level (full walls)

- LIKE MOVABLE
- + FLEXIBLE - OF
- NO BUILTINS AT
- MOVEABLE/WOBBLY
- VARIED SEATING
- SHORTER COUNTERS - APPROPRIATE SIZED DEPTH
- TECHNOLOGY - CHARGING STATION
- WHAT TO DO



Guiding Principles

- Preserve small neighborhood schools
- Support the relationship of individual gifted teachers with small classes
- Emphasize student participation in learning
- Develop fluid collaboration opportunities
- Support teacher professionalism
- Connect with the community



Elementary Classrooms

Program	Facility	Size
3 streams of classes	18 regular classrooms, movable furniture and storage, whiteboards on three walls minimum	960 sf each 1-3 1080 sf each 4-6 (where possible) 3 portables
3 kindergartens	1200 sf classroom, plus storage and toilet	1350 sf inclusive
1 transitional kindergarten	Kindergarten room	1350 sf inclusive
Flex rooms	2 classrooms, additional storage, additional sinks	1200 sf each, kiln @80 sf
STEM lab	1 classroom, additional storage, additional sinks	1200 sf
RSP	1 classroom	960 sf
Small group instruction	ESL, Speech and Language, small group x 4	1500 sf total



Elementary Multi and Library

Program	Facility	Size
Accommodate entire school for an assembly, half school for lunch	7 sf/child in assembly space	Approximately 4000 sf assembly space
Performance	Raised platform with theater lights, curtains	1000 sf inclusive of storage
Kitchen/Servery	Serving windows to outdoors under cover	480 sf
Restrooms	Children and staff	60 sf each
PTA storage/meeting	Room for small group	250 sf
Library	Flexible space with movable furniture	2900 sf
Computer lab	Connected to library	480 sf
Server and Tech office	Connected to library	150 sf



Elementary Admin and Operation

Program	Facility	Size
Waiting/reception	Single point of entry to school	720 sf
Principal	Office with small meeting	200 sf
Health	With toilet	280 sf
Files/storage	240	240 sf
Psych/counseling	Offices	2 @180 sf
Conference	Meeting of 12-15	240 sf
Staff work		840 sf
Staff lounge	With kitchenette	960 sf
Custodian	(2) storage/shop	400 sf
Storage	Textbook, emergency supplies, PE equip	500 sf
Restrooms, mech, elec	As required	6000 sf



7-8 Classrooms

Program	Facility	Size
General classrooms	23 regular classrooms, whiteboards on three walls minimum	960 sf each 3 portables
Art	1200 sf classroom, plus kiln room	1280 sf inclusive
Science	(4) 1200 sf classroom, plus prep	5600 sf inclusive
Music	Classroom, office, instrument storage, practice	2000 sf
Drama	Classroom, platform stage, storage	2000 sf
Shop/fab lab	1 classroom	1500 sf
Small group instruction	6 small group	1500 sf total



7-8 Multi and Library

Program	Facility	Size
Accommodate entire school for an assembly	7 sf/child in assembly space	Approximately 4000 sf assembly space
Performance	Raised platform with theater lights, curtains	1000 sf inclusive of storage
Kitchen/Servery	Serving windows to outdoors under cover	480 sf
Locker rooms	Include restrooms	1500 sf
Restrooms	Children and staff	60 sf each
PTA storage/meeting	Room for small group	250 sf
Library	Flexible space with movable furniture	4500 sf
Media studio	Connected to library	250 sf
Server and Tech office	Connected to library	150 sf



7-8 Admin and Operation

Program	Facility	Size
Waiting/reception	Single point of entry to school	720 sf
Principal	Office with small meeting	200 sf
Health	With toilet	280 sf
Files/storage	240	240 sf
Psych/counseling	Offices	2 @180 sf
Conference	Meeting of 12-15	240 sf
Staff work		840 sf
Staff lounge	With kitchenette	960 sf
Custodian	(2) storage/shop	400 sf
Storage	Textbook, emergency supplies, PE equip	500 sf
Restrooms, mech, elec	As required	6000 sf



Outdoor Uses

Program	Facility	Size
Kindergarten play	Dedicated kindergarten only play area	Increase for extended day kindergarten use
Blacktop	Preserve striped area	
Adventure play	Natural climbing, exploring, studying	
Sports	Basketball hoops, fields	Coordinate with city
Garden	Coordinate with parent groups	
Outdoor learning	Adjacent to classrooms, library, multi, flex	
Lunch	Shaded	Single session lunch
Teacher lunch	Private	



California Standards, K-6

Program	Facility	Size
Kindergarten play	Dedicated kindergarten only play area	.7 acres
Blacktop	Primary and upper grade	1.2 acres
Apparatus	Primary and upper grade	.4 acres
Fields	Primary and upper grade	3.8 acres
Garden	Coordinate with parents	
Outdoor learning	Adjacent to classrooms, library, multi, flex	
Lunch	Shaded	
Teacher lunch	Private	
Parking and drop off		.8 acres
Developed land	Area for 1-story layout	2.2 acres
Developed land	Area for 2-story layout	1.3 acres
TOTAL	Range	8.4-9.3 acres



California Standards, 7-8

Program	Facility	Size
Blacktop		1.4 acres
Apparatus		.1 acres
Fields		9.7 acres
Garden	Coordinate with parents	
Outdoor learning	Adjacent to classrooms, library, multi, flex	
Lunch	Shaded	
Teacher lunch	Private	
Parking and drop off		.9 acres
Developed land	Area for 1-story layout	2.6 acres
TOTAL		17.6 acres



Model K-6 School

K-6 School_Proposed



Model K-8 School

K-8 School_ Proposed



Egan with 6th Grade

Egan_Proposed_Middle School



Blach with 6th Grade

Blach_Proposed_Middle School

Leased pre-school location

New classrooms

New 6 area



Asset Preservation Needs

- Finish structural improvements
- Continue energy upgrades
- Create uniform technology infrastructure
- Replace portable/obsolete admin, library, multi buildings
- Improve field drainage and irrigation
- Build permanent shade structures



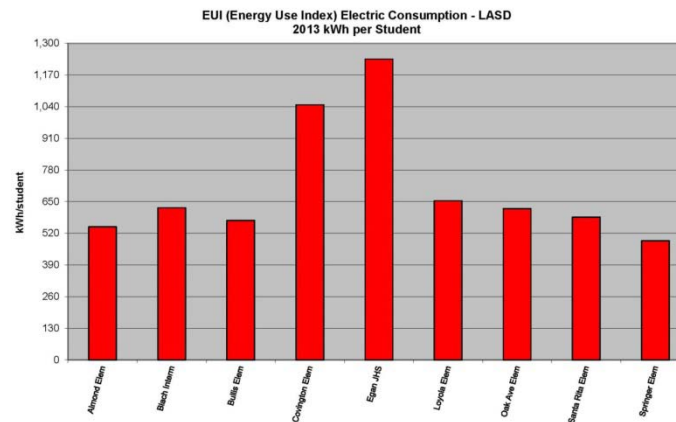
Support Instruction

- Replace undersize multi's
- Extend library uses
- Replace obsolete computer labs
- Increase small group support
- Replace portable classrooms with permanent
- House STEM, art and music programs appropriately
- Support teacher work
- Increase outdoor uses



Sustainability

- Improve daylighting and HVAC where needed
- Improve drainage and irrigation
- Support walking/biking
- Install PV system to bring LASD to Zero Net Energy



21st Century Libraries

Collaboration

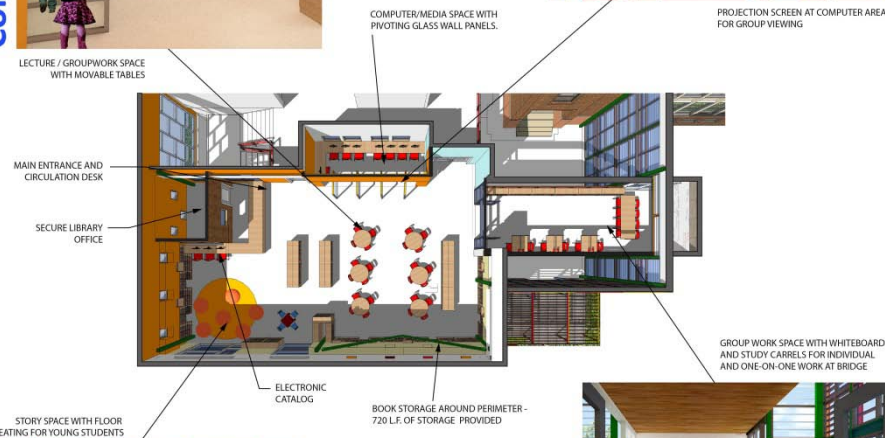


LECTURE / GROUPWORK SPACE WITH MOVABLE TABLES

Digital Media



PROJECTION SCREEN AT COMPUTER AREA FOR GROUP VIEWING



STORY SPACE WITH FLOOR SEATING FOR YOUNG STUDENTS

Curiosity



Individual Discovery



21st Century Multi's

Flexibility

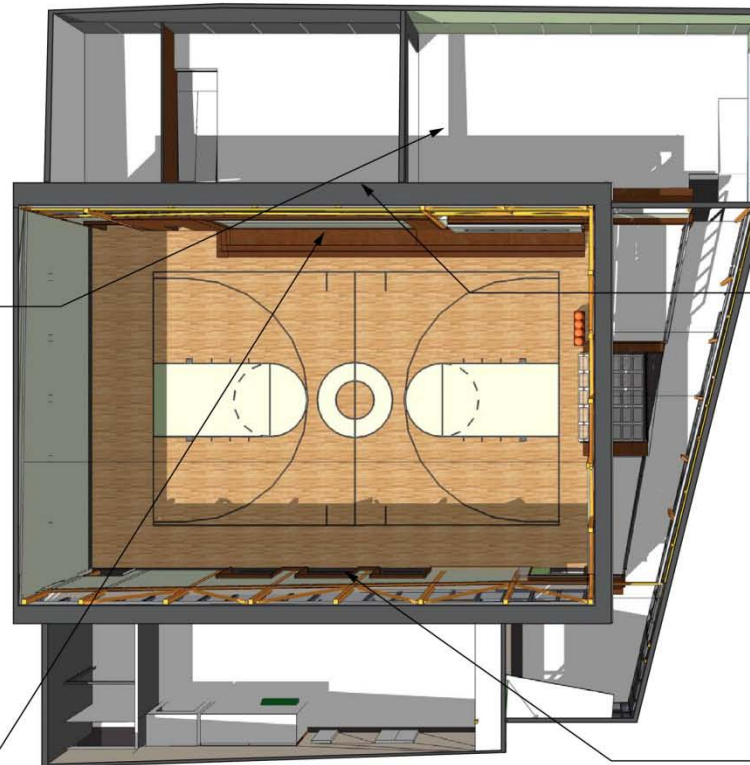


LARGE, FLEXIBLE MULTIUSE SPACES ALLOW OPEN CONNECTIONS FOR LARGE EVENTS

Indoor Play



OPERABLE PARTITIONS SEPARATE GYM FROM STAGE AND FLEX SPACE, CREATING TWO INDOOR PLAY AREAS



Performance



STAGE FUNCTIONS AS PERFORMANCE SPACE WITH FLEX ROOM AS BACKSTAGE SUPPORT AREA

Lunch Area



KITCHEN SERVES MULTIPURPOSE THROUGH A LARGE OVERHEAD DOOR OPENING

21st Century Classrooms





21st Century Kids

