

SUPERINTENDENT’S MESSAGE 2024

Thank you to our community for playing a critical role in supporting our schools: our students, amazing teachers, staff, parents, and neighborhood leaders.

This school year, our community came together once again to support our schools by passing Measure A, a local educational parcel tax for Los Altos School District. This local funding supports our excellent academic programs and top-quality teachers. Local voters passed Measure A with an overwhelming 75% yes vote.

The support of our entire community is what makes our schools among the best in the State. In particular, I also want to thank our teachers and staff for their tireless work, contributing to the success of every child. Our award-winning, innovative academics and classroom instruction has resulted in our schools’ consistent ranking in the top 1% of more than 1,000 school districts across California. Every student success story, every cutting-edge new elective and every classroom innovation starts with a great teacher.

For nearly 30 years our community has supported our top-notch teachers and award-winning schools with voter-approved, local parcel tax funding to deliver the excellent education we’ve come to expect in the Los Altos School District. We thank local voters for renewing this support once again by passing Measure A. Parcel tax funding comprises 12% of our school district budget and is a critical component to funding the academic programs and classroom instruction we expect from our schools.

For decades, state funding for our schools has been uncertain and unstable. Locally-based revenues from our parcel taxes allow us to attract and retain top-quality teachers, support core academic programs and expand innovative STEM programs.

Thank you for helping keep our schools among the very best!

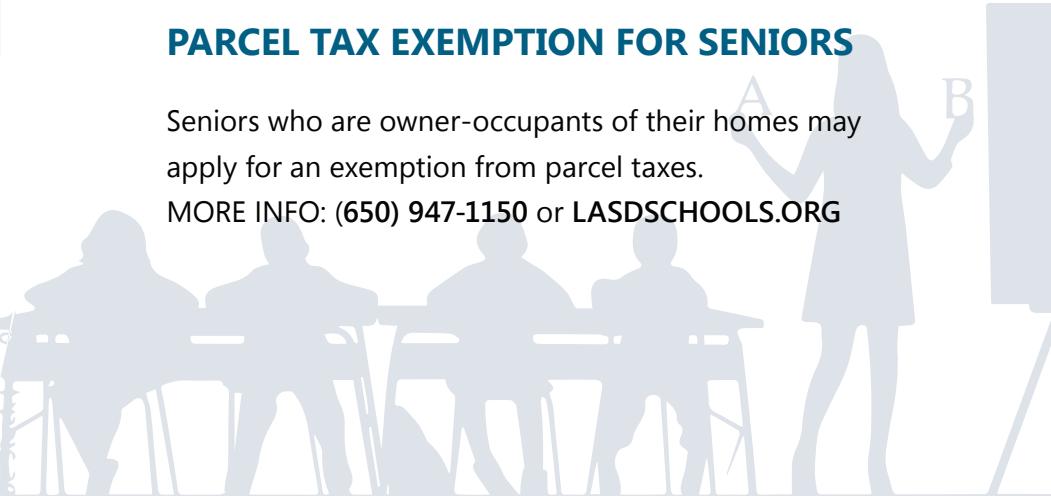
Sandra McGonagle
Superintendent, Los Altos School District

PARCEL TAX FUNDING
FOR TEACHERS
& STUDENTS

LASD is a top-performing, innovative district with all schools earning California Distinguished School Awards. Parcel tax funding helps maintain outstanding core academic programs and attract and retain high quality teachers. The funds also contribute to leading edge STEM programs and to new modes of learning, which help ensure that LASD schools remain at the forefront of education in California. Parcel taxes help lower class sizes and support junior high electives by providing additional funding for teacher salaries. Funds also contribute to routine maintenance, as well as nursing and counseling staff.

PARCEL TAX EXEMPTION FOR SENIORS

Seniors who are owner-occupants of their homes may apply for an exemption from parcel taxes.
MORE INFO: (650) 947-1150 or LASDSCHOOLS.ORG

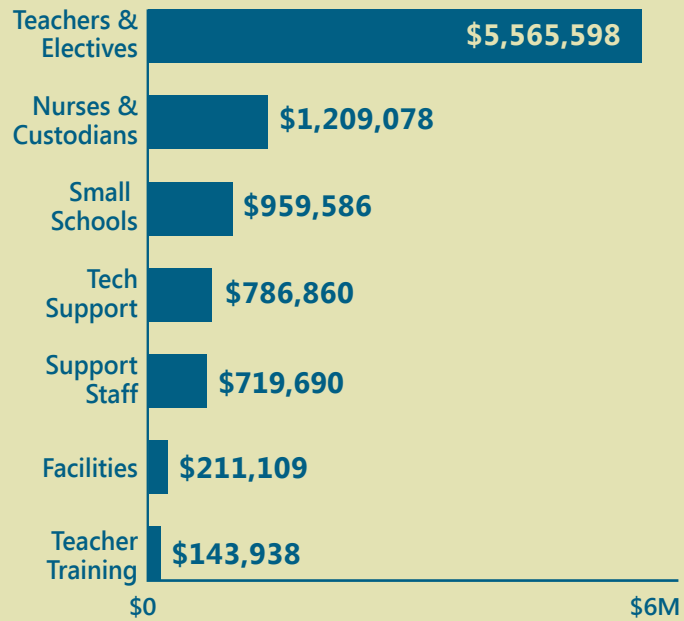


PARCEL TAX OVERSIGHT BY THE CACF

The Citizens’ Advisory Committee for Finance (CACF) is an independent committee of community members appointed by the Board of Trustees to provide oversight and accountability for parcel tax uses. Over the years, the district has implemented policies recommended by CACF regarding staff recruiting, medical premiums and budget reserves. To learn more about:

- CACF: [LASDSCHOOLS.ORG/CACF](https://lasdschools.org/cacf)
- District Finances: [LASDSCHOOLS.ORG/CACF/ABCs](https://lasdschools.org/cacf/abc)

PARCEL TAX EXPENDITURES FOR 2022-23

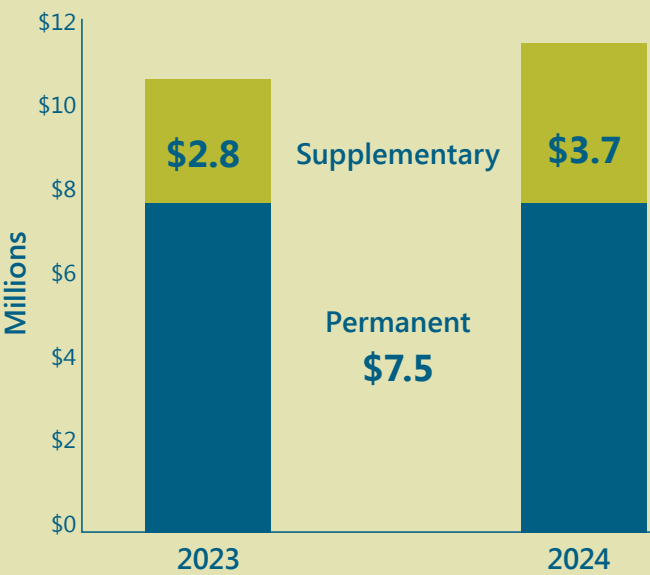


This table is a fair representation of how parcel tax proceeds were spent.

PARCEL TAX RENEWED

In November 2023, the voters of LASD approved a renewal of the supplementary parcel tax at a rate of \$295 per parcel, which will be assessed beginning this fall (and annually adjusted at 4% per year). This supplementary parcel tax, combined with the permanent one, provides critical funding for operating expenses. These funds cannot be used for capital expenses such as new facilities or significant upgrades to existing facilities.

PARCEL TAX REVENUE



NON-PROFIT
ORGANIZATION
U.S. POSTAGE
PAID
PERMIT NO. 26
LOS ALTOS
CARRIER ROUTE,
PRE-SORT

LASD
Los Altos School District
201 Covington Road
Los Altos, CA 94024

POSTAL CUSTOMER

STRONG SCHOOLS BENEFIT THE COMMUNITY

The community benefits from well-funded public schools that succeed in educating and supporting our youngest community members. Award-winning schools can also attract home buyers and increase property values for all.

LASD | 9 CALIFORNIA DISTINGUISHED SCHOOLS



LASDSCHOOLS.ORG

Los Altos School District

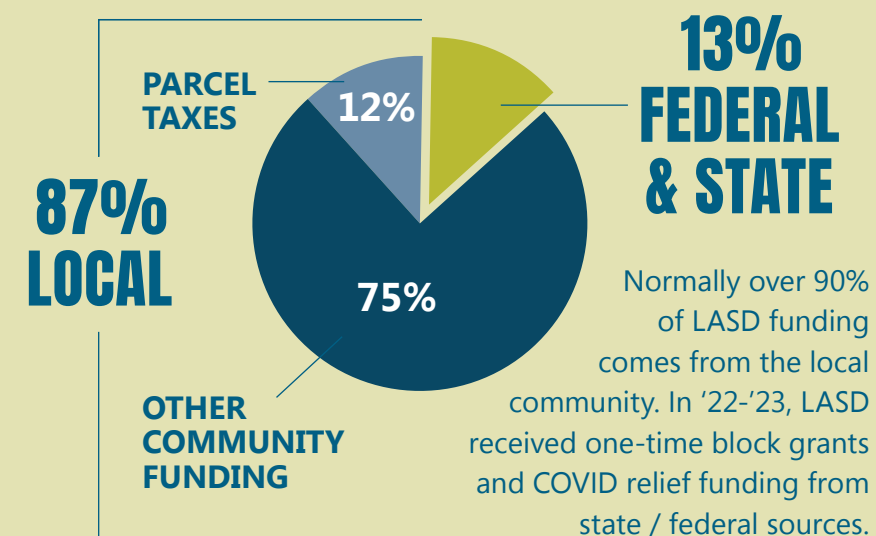
REPORT CARD fiscal year **2022-23**

Annual Accountability Report To Taxpayers

LOCAL FUNDING IS CRITICAL FOR LASD

Los Altos School District (LASD) is a community funded district. Operating revenues mostly come from property taxes, parcel taxes, and developer fees. Parents and Community donors continue to provide meaningful additional support through each school's PTA as well as the Los Altos Educational Foundation (LAEF), which contributed over \$2.5M in 2022/23. As a community funded "basic aid" district, LASD generally does not receive increased government funding for state-mandated programs.

2022-2023 LASD FUNDING SOURCES



KEY CHALLENGES

Currently the district's reserves are healthy, but they are being drawn down to cover growing expenses.

Operating during COVID required increased staffing and the district is working to responsibly manage right-sizing staff through natural attrition of teachers and classified staff. State-mandated programs, such as universal meals and the expansion of transitional kindergarten to all 4 year olds, require ongoing investment of the district's general funds while the state provides minimal associated funding. Expenses, such as state-mandated contributions to retirement, and healthcare costs, also continue to increase.

The district is monitoring slowdowns in revenues, including lower property tax growth, as well as a potential decline in the modest state support it does receive.

REVENUES PER STUDENT FOR 2022-2023

